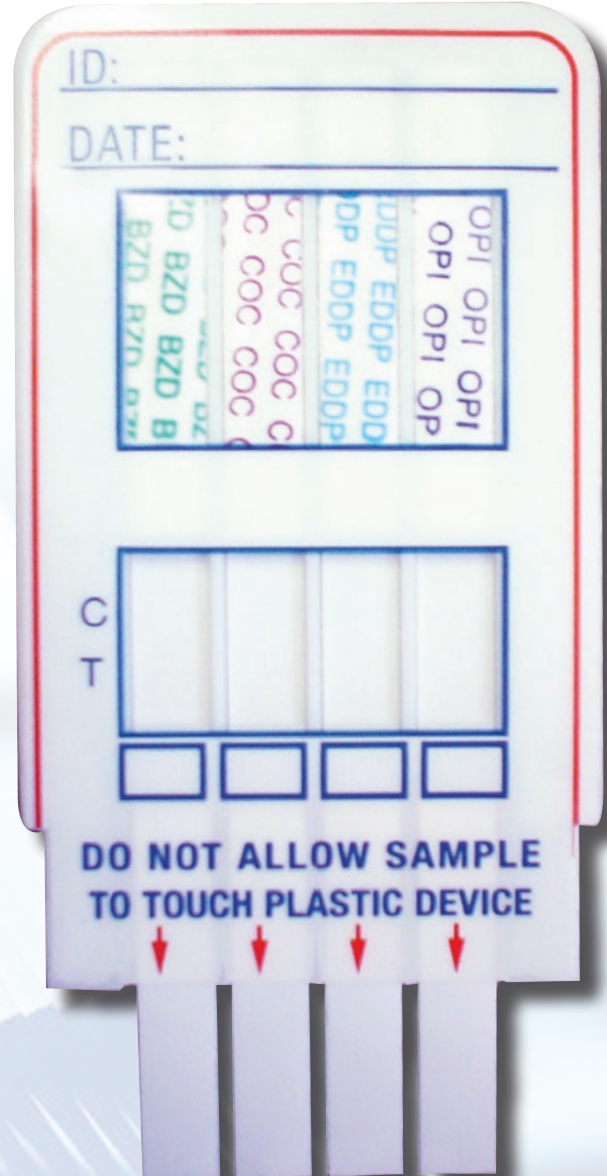
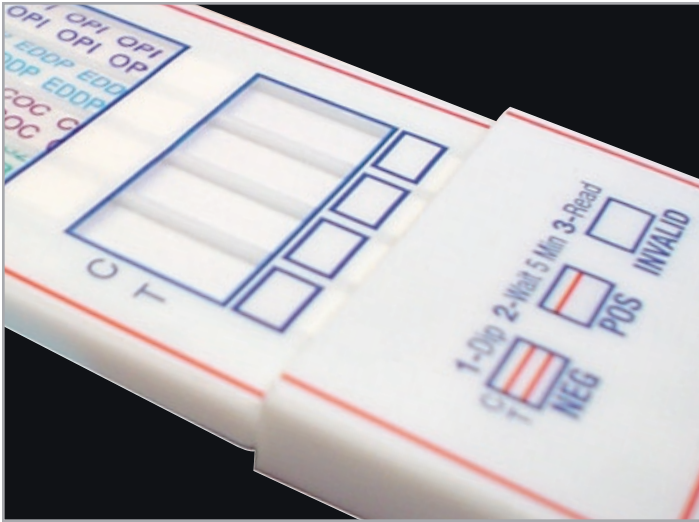


MICROGENICS EDDP RAPID DRUGS OF ABUSE PANEL TEST

BENZODIAZAPINE • COCAINE • OPIATES • EDDP

Available Exclusively From Diagnostix!



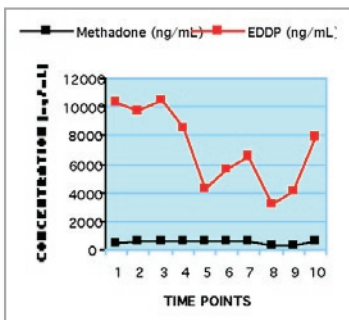
The Microgenics EDDP Rapid Drugs Of Abuse Panel Test is a one-step point of care in-vitro test intended for the qualitative detection of Benzodiazepine, Cocaine, Opiates & EDDP (Methadone Metabolite) in human urine at the following cut-off levels: Benzodiazepine 300 ng/mL; Cocaine 300 ng/mL; Opiates 300 ng/mL; **EDDP 100 ng/mL**

Key Benefits & Features

- The only 4-panel test with EDDP in the market!
- Results in 5 minutes: Quicker turnaround time compared to laboratory results
- Cost effective: Lower costs by testing on-site
- Eliminate false negative results and identify “Spikers”
- Safeguard patients from incorrect intervention

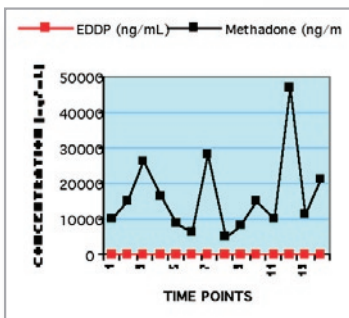
Manufactured by
Microgenics Corporation
(An Apogent Company)

ISO 13485 Certified • Health Canada Approved



Fast Metabolizer

This subject illustrates a case of rapid metabolism that is probably drug induced. The patient had very high levels of EDDP in all specimens collected but levels of methadone ranging from 121 to 284 ng/mL. In this patient, use of methadone screens alone would lead to incorrect conclusions about compliance with methadone treatment since they are all negative.



Probable Methadone Spiker

This figure shows a patient with extraordinarily high levels of methadone, ranging up to more than 40,000 ng/mL (4-10 times higher than typical levels). In contrast to specimens from most patients, no EDDP was found in the specimens from this subject, strongly suggesting diversion of the methadone and “spiking” of the urine to pass the drug screens.

Cross Reactivity

The following table lists compounds that produce positive results when tested at levels equal or greater than the concentrations listed below:

Drug Category	Metabolite	Concentration (ng/mL)
Benzodiazepines	Alprazolam	1000
	Bromazepam	1000
	Chlor diazepoxide HCl	300
	Clobazam	300
	Clonazepam	2000
	Desmethyldiazepam	300
	Diazepam	1000
	Flurazepam	100
	Flunitrazepam	1000
	Lorazepam	1000
	Nitrazepam	100
	Oxazepam	300
	Temazepam	300
Cocaine	Benzoylcegonine	300
	Cocaine	30,000
EDDP	EDDP	100
	EDMP	200,000
	Methadone (Parent)	500,000
Opiates	Codeine	300
	Ethylmorphine	300
	Heroin	1,250
	Hydrocodone	1,250
	Hydromorphone	300
	Morphine	300
	Morphine-3-b-glucuronide	300
	Nalorphine	750
	Naloxone	25,000
	Natrexone	100,000
	Norcodeine	2,500
	Normorphine	2,000
Oxycodone	> 100 ug/mL	